

# PAEDIATRIC MRI

PATIENT INFO LEAFLET





## Can you colour me in...

For even more information watch our video: [www.inhealthgroup.com/services/mri-scan](http://www.inhealthgroup.com/services/mri-scan)

This is Pugsley, he's not allowed in the scanning centre but he sneaks in as he likes the sound of the MRI and finds it funny.

He appears in this booklet 7 times\*.

**Can you help us find him?**



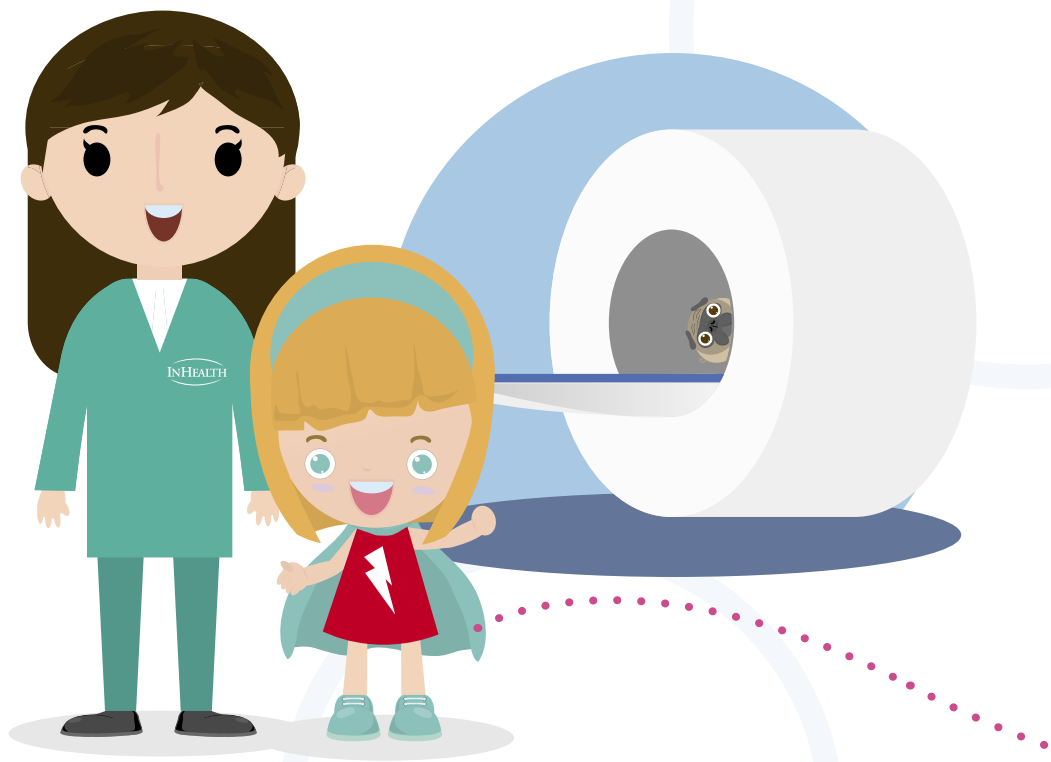
\*(not including this one, clever clogs!)

You have been asked by your  
doctor to have an MRI scan...  
**but what is it?**



For even more information watch our video: [www.inhealthgroup.com/services/mri-scan](http://www.inhealthgroup.com/services/mri-scan)

**INHEALTH** | MAKING HEALTHCARE BETTER

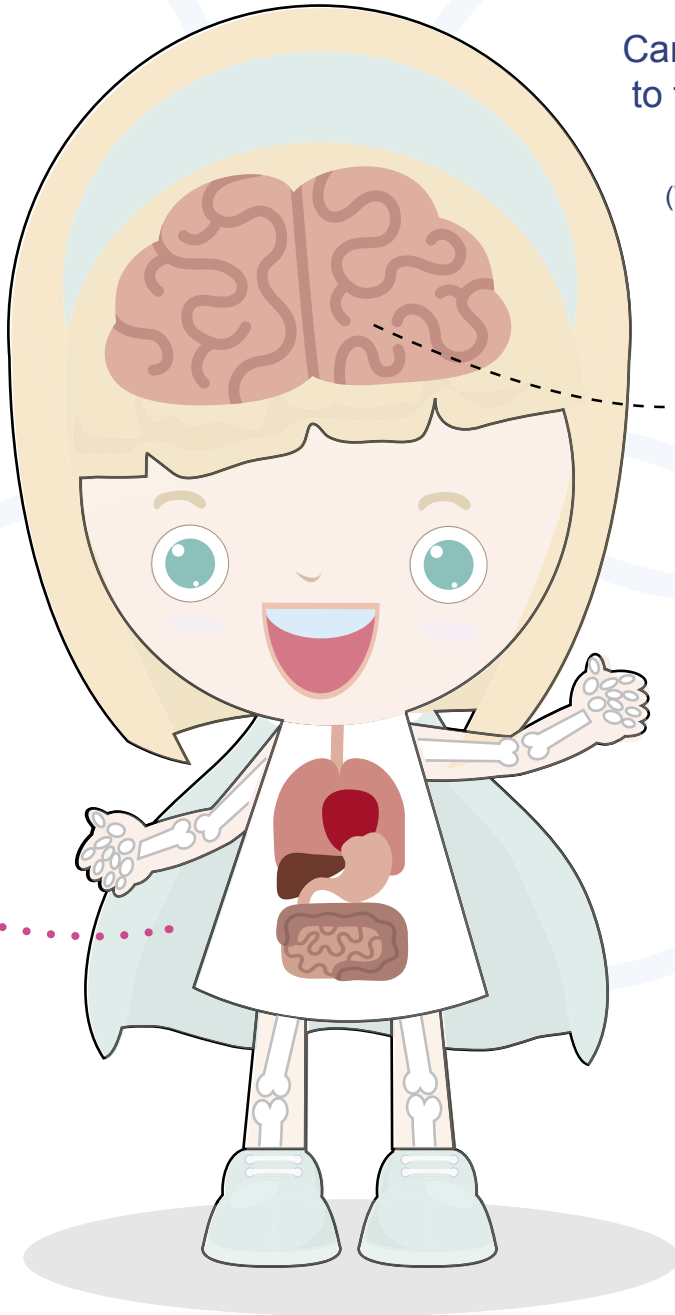


An MRI is a way of taking special types of pictures of the inside of your body – such as, your tummy, your muscles and your bones.

And even your brain... we think it's pretty cool.

Can you draw a line to the correct parts of the body?

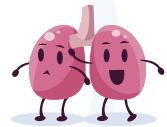
(We've done the first one for you)



brain



heart



lungs



liver



stomach



intestines

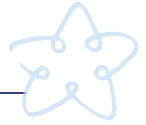


An MRI uses a magnet and a special camera to take the pictures, and looks a bit like a giant toilet roll!

It doesn't hurt, it's just very noisy like a road digger.



Who's who...



## receptionist

a friendly member of the scanning team who greets you with a smile and makes sure you feel welcome

---



You will be greeted at the scanning centre by a friendly **receptionist** who will talk to the grown up with you and book you in.



INHEALTH



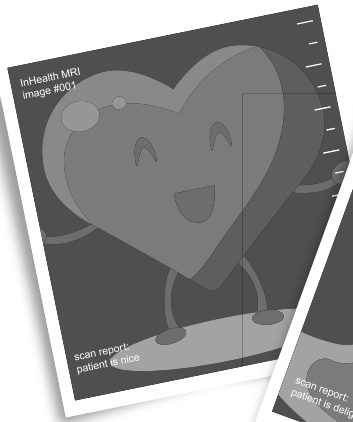


The grown up with you will be asked to answer some questions about any operations you may have had before.

You will be asked to remove any watches, earrings or coins in your pockets, and may be asked to take off some of your clothes and put on a gown (which can make you look a bit like a Super hero!)

– you can always bring pyjamas or your gym kit with you if that is more comfortable!

# INHEALTH





You need to lie flat and keep very still for your scan. If you wriggle or fidget the pictures will come out blurry and will need to be done again.

A piece of equipment may be placed over the body area being scanned; this is like a camera helping to take the pictures.

Depending on what part of your body is being scanned, you may go into the scanner feet first or head first.



The grown up with you can **sometimes** stay in the scan room and hold your hand or leg during the scan.

The scanner makes loud funny noises so you will be given earplugs or headphones to wear.

Sometimes you can even listen to music during your scan.



Who's who...



## radiographer

a friendly member of the scanning team who performs your scan and looks after you throughout



The **radiographer** doing the scan will be able to talk to you between the noises and can see you through the window at all times – you will have a call bell to squeeze if you need them.



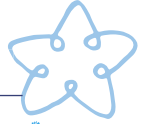


The best way to keep still in the scanner is to close your eyes and imagine your favourite things or a nice memory, maybe even make up a story or some tunes to the sound of the scanner.

Once the scan is finished you can go home. Your pictures will be looked at by a **radiologist** who will note down what they see and tell your doctor.



Who's who...

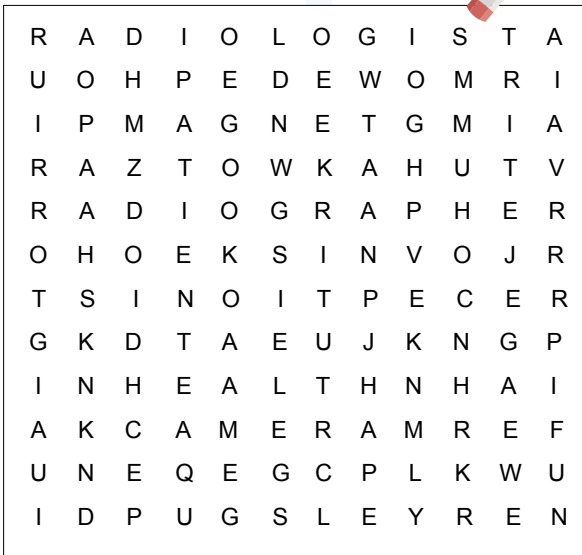


## radiologist

a special type of doctor who is an expert at looking at MR pictures of your body

# Word SEARCH

Can you find...



- RADIOGRAPHER
- MRI
- PATIENT
- PUGSLEY
- MAGNET
- RECEPTIONIST
- SCANNER
- RADIOLOGIST
- CAMERA
- INHEALTH



# CONGRATULATIONS

This is to certify that

.....  
has successfully been through an MRI machine

And has officially been awarded the  
InHealth MRI Bravery Award



.....  
Date

.....  
Signed

For even more information watch our video: [www.inhealthgroup.com/services/mri-scan](http://www.inhealthgroup.com/services/mri-scan)

For more information on InHealth please contact:

**+44 (0) 01494 560 000** | [info@inhealthgroup.com](mailto:info@inhealthgroup.com) | [www.inhealthgroup.com](http://www.inhealthgroup.com)